

SUBDIVISION PLAN OF  
 LOT A Sec 16 Tp 91 KDYD  
 PLAN KAP92785

PLAN EPP121431

BCGS 92 | 006, 92 | 007, 92 | 016 AND 92 | 017

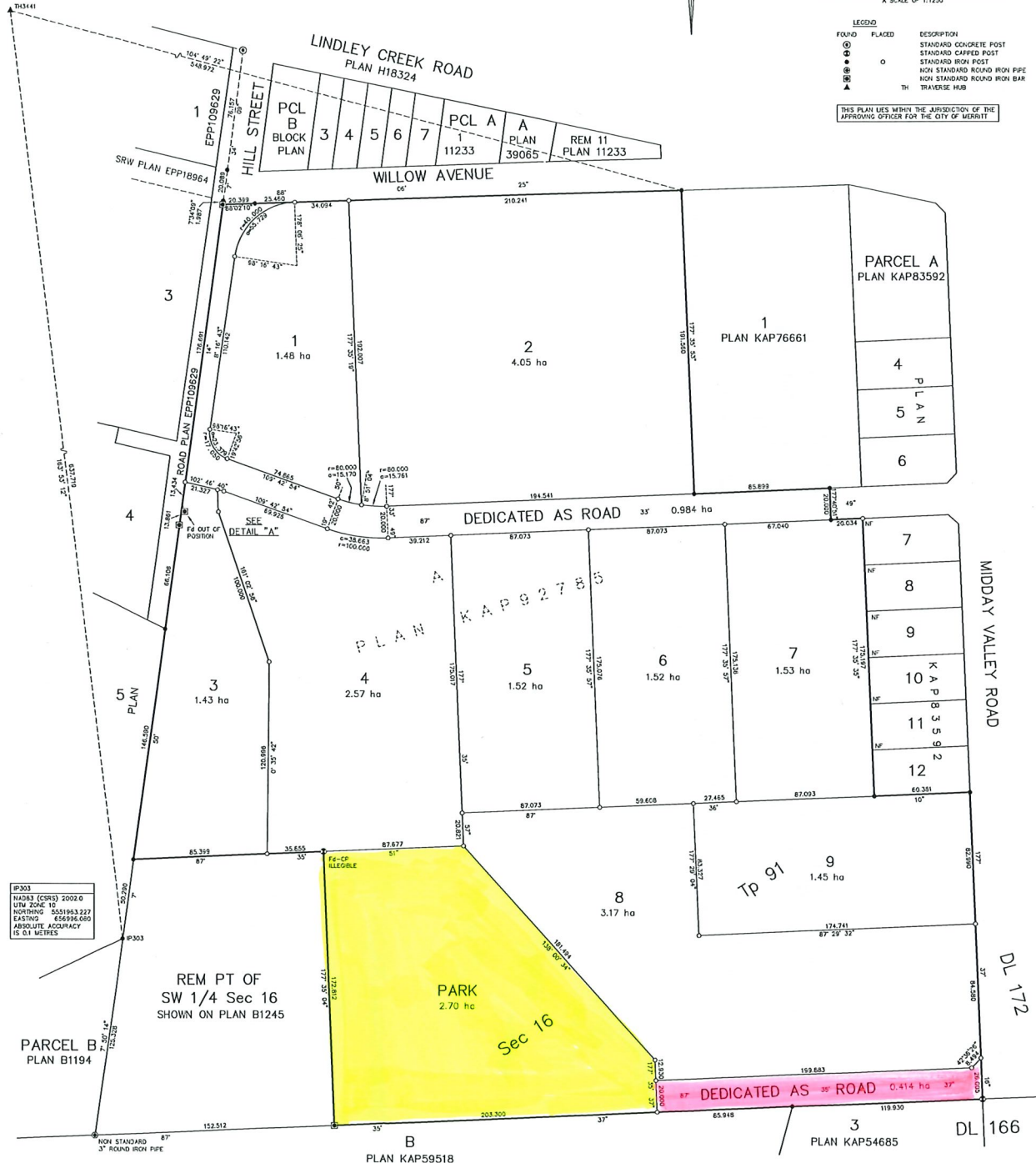
#13441  
 NAD83 (CRS) 2003.0  
 UTM ZONE 10  
 NORTHING 555935.777  
 EASTING 656819.122  
 ABSOLUTE ACCURACY  
 15.01 METRES



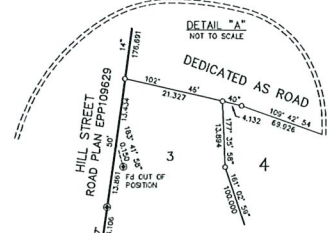
20 0 20 40m  
 THE INTENDED PLOT SIZE OF THIS PLAN IS 500mm IN WIDTH  
 BY 654mm IN HEIGHT (SHEET SIZE D) WHEN PLOTTED AT  
 A SCALE OF 1:1250

FOUND	PLACED	DESCRIPTION
○	○	STANDARD CONCRETE POST
○	○	STANDARD CHAFED POST
○	○	STANDARD IRON POST
○	○	NON STANDARD ROUND IRON PIPE
○	○	NON STANDARD ROUND IRON BAR
△	△	TRAVELER HUB

THIS PLAN LIES WITHIN THE JURISDICTION OF THE  
 APPROVING OFFICER FOR THE CITY OF WREXHAM



#P303  
 NAD83 (CRS) 2002.0  
 UTM ZONE 10  
 NORTHING 5551963.237  
 EASTING 656996.000  
 ABSOLUTE ACCURACY  
 15.01 METRES



THIS PLAN SHOWS HORIZONTAL GROUND LEVEL DISTANCES  
 IN METRES AND DECIMALS THEREOF UNLESS OTHERWISE SPECIFIED  
 TO COMPUTE GRID DISTANCES, MULTIPLY GROUND LEVEL  
 DISTANCES BY THE AVERAGE CORRECTION FACTOR OF 0.99910066  
 THE AVERAGE CORRECTION FACTOR HAS BEEN DETERMINED  
 BASED ON AN ELLIPSOIDAL ELEVATION OF 583 METRES  
 GRID BEARINGS ARE DERIVED FROM DUAL FREQUENCY  
 DIFFERENTIAL CARRIER PHASE OBSERVATIONS AND ARE REFERRED  
 TO THE CENTRAL MERIDIAN OF ZONE 10 (LONGITUDE 123° WEST)  
 THE UTM COORDINATES AND ESTIMATED ABSOLUTE ACCURACY ACHIEVED  
 ARE DERIVED FROM NATURAL RESOURCES CANADA'S PRECISE  
 POINT POSITIONING (PPP) SERVICE AT TH3441 AND #P303  
 THE FIELD SURVEY REPRESENTED BY THIS PLAN WAS COMPLETED  
 ON THE 14TH DAY OF SEPTEMBER, 2023  
 CHRISTOPHER JOHN DE HANCK, ELS (PFS)

CAD FILE: T06246-SUB-RS.DWG (SEP 16/23)

UNDERHILL & UNDERHILL  
 PROFESSIONAL LAND SURVEYORS  
 201-925 WHEATSTER WAY  
 KAMLOOPS, B.C. V2C 6K2  
 TEL: (250) 372-6835