



The Elk Gold Mine

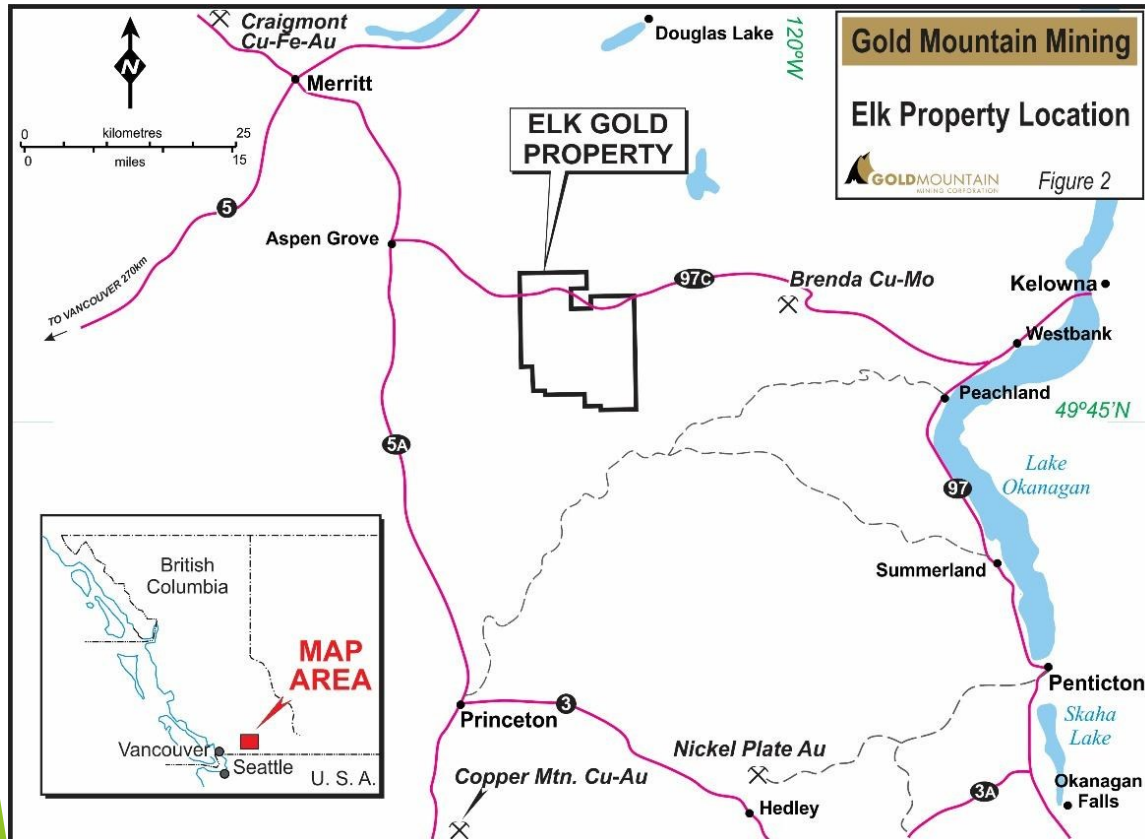
Project Information Package

Gold Mountain Mining Company

A wholly owned subsidiary of
Bayshore Minerals Inc.

January 2020

Project Location



Project Team

Bayshore Minerals Inc. is run by co-founders Ron Woo and Grant Carlson.



Ron is a mining engineer who has worked throughout BC, Alberta, South America and the Northwest Territories.



Grant is a mining engineer who has lived and worked in Vancouver, the Yukon and Williams Lake, BC.

Mining History

- ▶ First explored in 1986-91
- ▶ Small scale mining 1992-94
- ▶ Further exploration 2002-2010
- ▶ Bulk Sample Mined 2012-14
- ▶ On Care and Maintenance from 2015 to present



Mining History

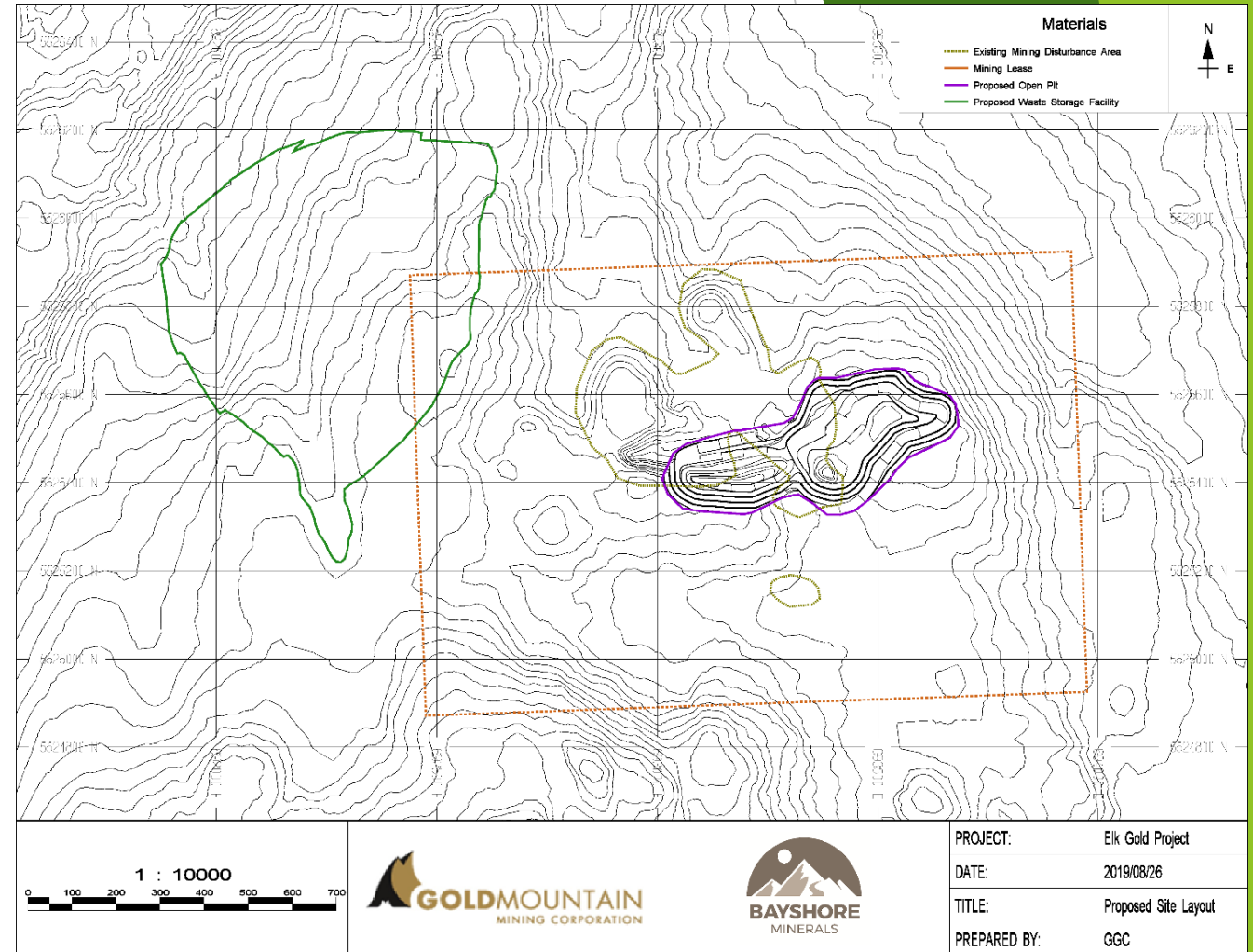


Archeology and Cultural Resources

- ▶ First Archeological Resource Overview Assessment Completed in 1992
- ▶ Second AOA and Field Reconnaissance in 2011 by USIB and UNIB (lead by Brenda Gould)
- ▶ Project area classified as Low to Moderate archeological potential
- ▶ No archeological sites found
- ▶ Chance Find Procedure in place
- ▶ Further field assessment required

Proposed Project

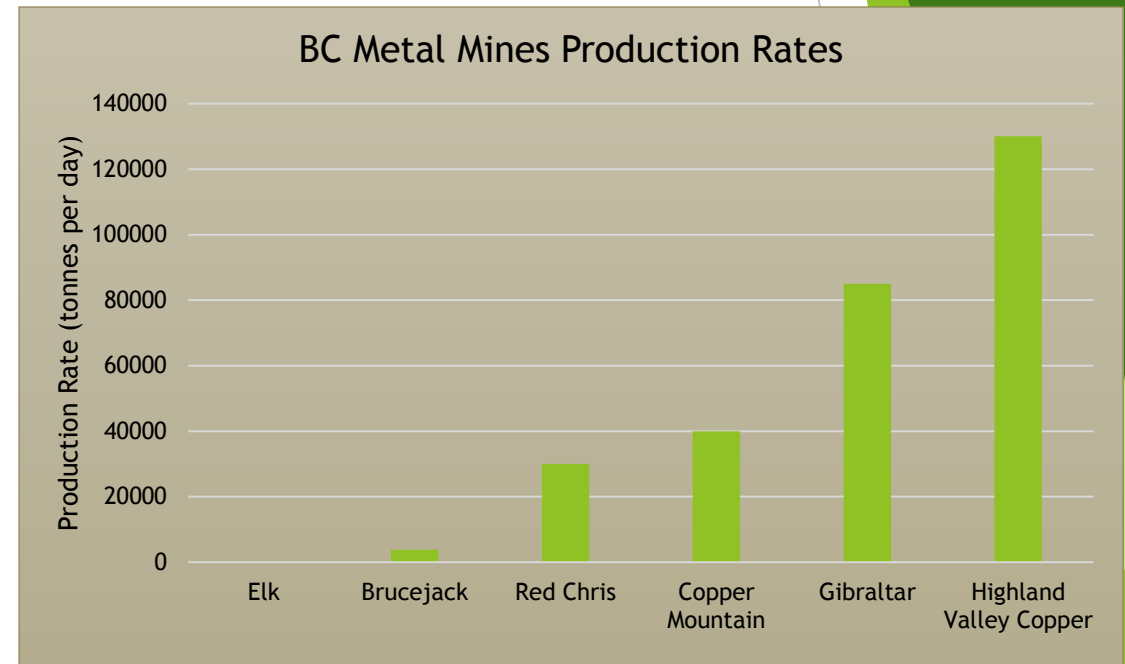
- ▶ Proposed Open Pit Gold Mine
 - ▶ 70,000 tonnes per year (200 tonnes per day)
 - ▶ 12 year mine life
 - ▶ 15 employees
 - ▶ Ore shipped offsite for processing
 - ▶ *This mean no contaminated process water to manage*
 - ▶ No tailings stored on-site
 - ▶ *This means to tailings dam and no risk of tailings dam failure!!*



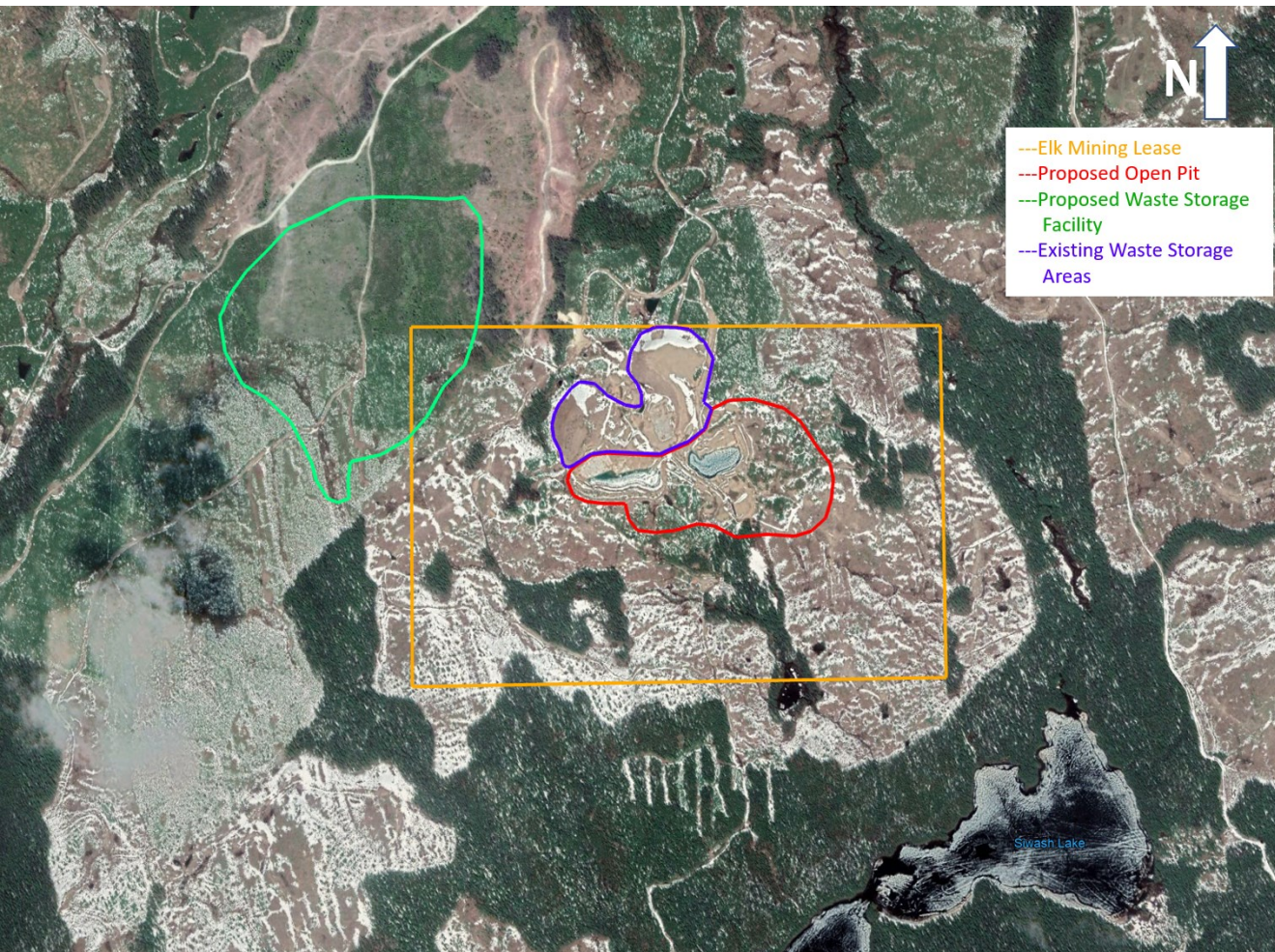
Proposed Project

- ▶ Proposed Facilities
 - ▶ Open Pit Excavation
 - ▶ Overburden, top soil and waste rock storage areas
 - ▶ Water Management features
 - ▶ Mine Site Office, explosives magazine and fuel store, and
 - ▶ Upgraded mine access road

At 200 tonnes per day, the Elk is a small-scale gold mine.



Environment



- ▶ Okanagan Highland Ecosystem
- ▶ Cold winters, short warm summers
- ▶ Rainbow trout in Siwash Lake, Siwash Creek
- ▶ Area 85% clear-cut

Environment

- ▶ *With no process plant and no tailings pond, Elk is designed to be a low-impact operation that protects the land and water.*
- ▶ *By the time the operation is complete, all areas of the property will be fully reclaimed.*



Community Impacts

- ▶ Employment
 - ▶ 20 employees who will operate and maintain the mining equipment
 - ▶ Ore haulage contract to Nicola Mill (Craigmont Mine Site)
 - ▶ Nicola Mill personnel
- ▶ Training - opportunities to develop new skills in:
 - ▶ Operating and Maintaining Equipment
 - ▶ Environmental Monitoring
 - ▶ Drilling and Blasting
 - ▶ Surveying
- ▶ Suppliers
 - ▶ Fuel
 - ▶ Tires
 - ▶ Parts
 - ▶ Explosives
 - ▶ Services (potable water, waste disposal)



Mineral Processing

Mineralize material will be processed offsite.

Rock will be hauled to Nicola Mining's mill at the old Craigmont Mine Site.

The mill feed will be six truck loads per day.



Timeline

- ▶ May 2019 - Project acquisition
- ▶ Summer 2019 - Environmental Baseline
- ▶ June 2019 - Ongoing - Community and First Nations Engagement
- ▶ March 2020 - Submit Mining Permit Applications
- ▶ Estimated October 2020- receive mining permits, construction decision.

Bayshore's Request to Merritt City Council:

Support from Merritt City Council would be extremely valuable as we go through the permitting process.

Would Council pass a motion of support or offer a letter of support to Bayshore in favor of developing the Elk Gold mine to the benefit of the residents of Merritt?

Thank you for your time.

Any Questions?